



**WESTCOAST WINDOWS**

UNIQUE VIEWS FROM SWEDEN

LIFT AND SLIDE DOORS FOR ALL ENVIRONMENTS

COMPOSITE ALUMINIUM TIMBER

# LIFT AND SLIDE DOORS

LIGHT UP YOUR LIFE



Designed, tested and proven in one of Europe's harshest climates; the West coast of Sweden, our sliding doors let the outside world become part of your home - whatever the weather.

Beautifully engineered to specification, our unique aluminium timber construction offers performance well in advance of all contemporary standards.

Swedish sliding doors for all environments.

Westcoast sliding doors are manufactured with the greatest care and precision, for discerning customers with tough demands when it comes to quality, design and function. Large glazed areas maximise light transmission without compromising comfort.

A delicate balance between glass, wood and aluminium results in a robust, yet elegant appearance that helps to keep down your energy costs and improve the value of your home. Our sliding doors, quite simply, provide a better outlook for a richer life.







## WELCOME TO AN OPEN HOME

**Invite the light into your home.** We all feel better and full of energy when we're surrounded by light. So it's important to make the best possible use of daylight whilst it's available. With large sliding doors, the light is free to flow into your home.

**Big spaces.** Our glass sliding doors provide a sense of volume and airiness. They also save space as they don't intrude into your room or project externally like hinged or bi-folding types.

**Sliding doors are a practical solution.** With a maximum width of 6 metres and a height of 2.4 metres, our sliding doors provide significantly bigger clear openings than traditional doors.

**Keep out the weather and the noise.** Whilst still maintaining good views, our sliding doors can be double or triple glazed with low emissivity, argon gas filled sealed units incorporating only the best warm edge technology for maximum insulation. Cosy up in your favourite armchair and enjoy the warmth and silence as nature puts on a show.

**Safe and secure.** Westcoast sliding doors are designed and assembled for safety and convenient ease of operation. The robust construction combined with the use of high performance locking devices means the doors offer exceptional levels of security.





*"All the style of aluminium.  
All the warmth of wood"*

#### CRYSTAL CLEAR BENEFITS

- Unique bonded aluminium/timber composite construction
- Exceptional weathertightness
- Low U-values
- High acoustic performance
- Safe and secure
- Elegant and robust
- Easy glide action
- Large uninterrupted views
- Low maintenance
- Hand built quality
- Huge choice of finishes



## STANDARD FACTORY OPTIONS

### Single leaf lift & slide – Type SDA

Provides one sliding leaf and one fixed leaf within a single frame.

### Double leaf lift & slide – Type SDC

Offers a pair of bi-parting sliding leaves with two fixed lights within a single frame.

### Fixed glazed frames – Type SDF

Combine single leaf or double leaf doors with suited fixed glazed panels to create the screen of your choice.

### Types of wood

Westcoast sliding doors are made as standard using PEFC certified North European Redwood or American White Oak, sourced from sustainably managed forests. Other timber species can be supplied on request.

### Choice of colours

Wood components are fully factory finished using only environmentally friendly water based paints, stains and lacquers.

External aluminium profiles are polyester powder coated in a wide range of standard factory colours or select your own special finish from the RAL or NCS colour charts.

### Glass & glazing

All sliding doors are factory double or triple glazed to specification with 28 mm or 36 mm safety glass sealed units incorporating the latest high performance low e coatings, argon gas filling and insulated super spacers as standard for the ultimate in thermal insulation, safety and security.

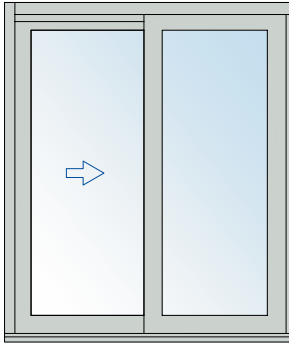


*All Westcoast windows and doors are constructed using laminated Redwood or Oak profiles for strength and dimensional stability – Other appropriate timber species can be specified.*



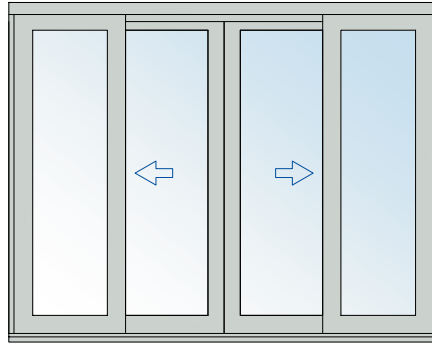
*Timber surfaces are beautifully factory finished with either white paint or clear lacquer as standard. A wide range of factory standard powder coat colours are available for aluminium profiles or choose you own colours for a small additional investment.*

## TECHNICAL DATA



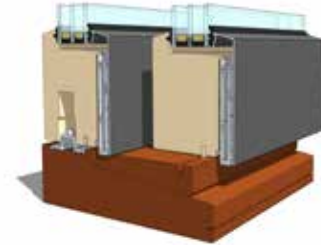
### Lift & Slide Door – Type SDA

Maximum frame width..... 4400 mm  
 Minimum frame width..... 1800 mm  
 Maximum frame height..... 2400 mm  
 Frame depth..... 185 mm



### Lift & Slide Door – Type SDC

Maximum frame width..... 6000 mm  
 Minimum frame width..... 3700 mm  
 Maximum frame height..... 2400 mm  
 Frame depth..... 185 mm



### A unique design

Westcoast lift & slide doors have a unique composite aluminium and timber construction. The two materials are bonded and mechanically fixed to provide a natural thermal break between the low maintenance external façade and the warmth and visual appeal of internal timber.

## HANDLES AND FITTINGS



Ironmongery pack 606



Ironmongery pack 607



Ironmongery pack 608

Westcoast lift & slide doors are fitted with the latest high performance ironmongery for maximum weather-tightness and security. Handles have a satin anodised finish and a choice of locking systems is available.

## GLAZING BARS



In common with all Westcoast window and door products, a comprehensive range of glazing bar designs can be provided to enhance the visual appeal of your home.





*These stunning images of the West coast of Sweden are the location of the popular chat show "Mia pa Grötö".*



**WESTCOAST WINDOWS**

UNIQUE VIEWS FROM SWEDEN

KARDANVÄGEN 42, SE-461 38 TROLLHÄTTAN, SWEDEN  
+46 (0)520 47 17 00 | WESTCOASTWINDOWS.SE

UNIT 8, BRICKFIELDS BUSINESS PARK, OLD STOWMARKET ROAD,  
WOOLPIT, BURY ST EDMUNDS, SUFFOLK, IP30 9QS, ENGLAND  
01359 241944 | WESTCOASTWINDOWS.COM